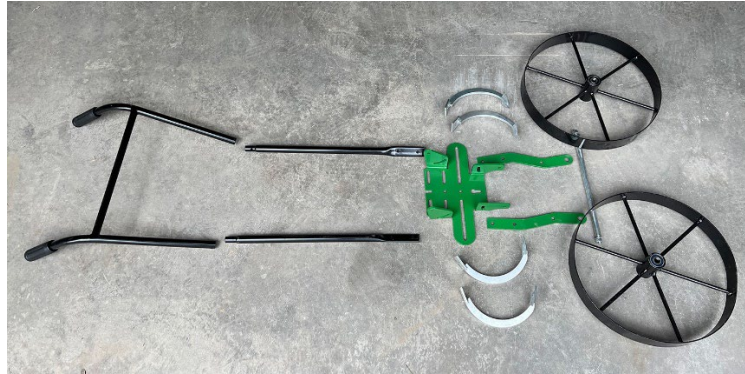


AgTec Double Wheel Hoe Assembly Instructions

What you will need:

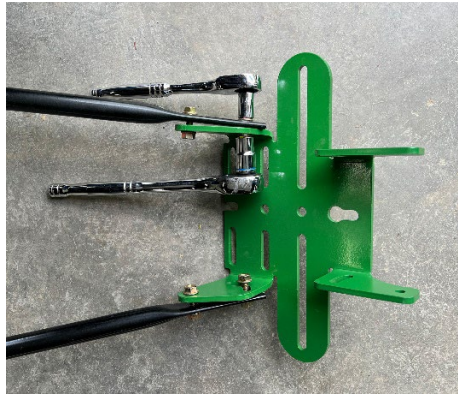
- Socket set with 12mil, 13mil and 17mil sockets
- Rubber Mallet



1. Join the bottom 2 pieces of the handle to the top and secure together with supplied cotter pin.

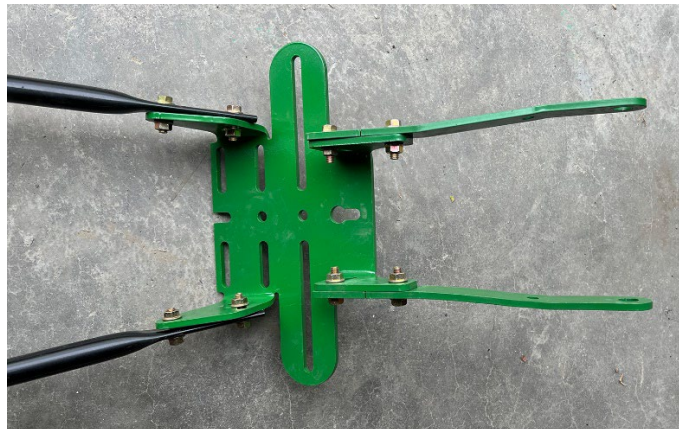


2. Fasten handles to body of the wheel hoe using the supplied bolts that are in place. Tighten bolts and nuts using a 12mil socket for the bolt and a 13mil socket for the nut.



Don't fully tighten until the end as the height is adjustable.

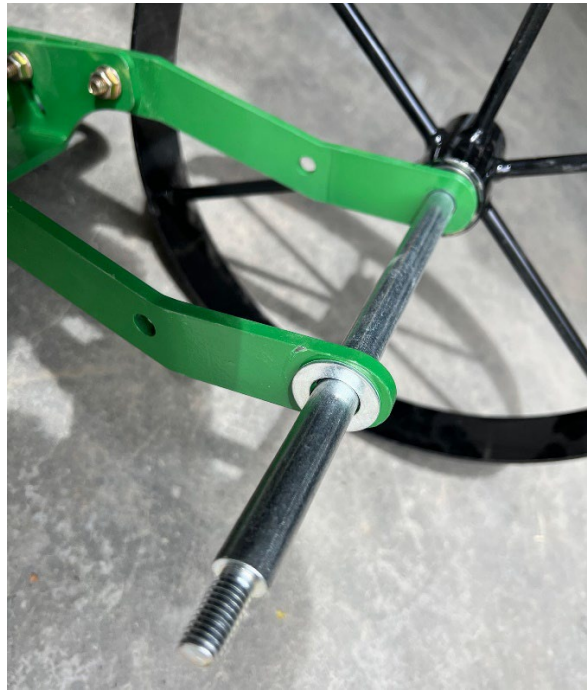
3. Attach the wheel arms to the outside of base. For double wheel hoe, correct orientation will have the wheel arms bowing outward slightly and angled downward toward the end. Again, do not fully tighten until the end.



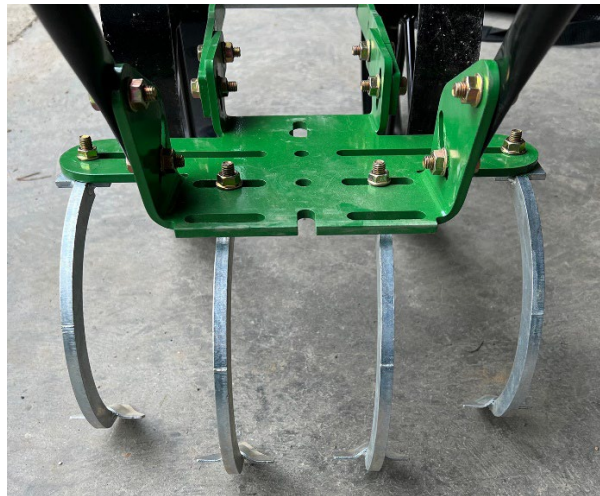
Note: To convert to a single wheel hoe, the 2 arms have to be swapped so the arms bow inward.

4. To attach the wheels.
 - a. Remove the nut and washers from both ends of the long axel and insert into the wheel arms.
 - b. Next place the large washers onto the axel to act as a spacer between the wheels and the wheel arms. This step is very important.
 - c. Next put the wheels on to either side of the axels lightly tapping with a rubber mallet if necessary being careful not to damage the threads.
 - d. Re-attach the washers and nuts to either side of the axel using a 17mm socket on both sides.

IMPORTANT: Remember to add the large washer as a spacer between the arm and the wheel or the wheel will just grind against the wheel arm.



5. Attach the cultivator teeth using a 12mil socket for the bolt and a 13mil socket for the nut. Cultivator teeth positions are adjustable but below is a typical placement.



6. Then finally make sure the handles, wheel arms and cultivator teeth are adjusted and then tightened into place. Keep in mind that the handles should be high enough so you can comfortably push the cultivator teeth downwards into the ground.



7. Now the wheel hoe is ready to rip through some dirt.



Tip: To ensure a long life, you can use JD Green and Gloss Black metal paint to touch up the paint. This will keep the wheel hoe rust free and in top condition.